

DISTRIBUTION SOLUTIONS

Fuse-links type WBP

Rated voltages 7.2 kV – 40.5 kV

Rated current 0.4 A – 4 A



Fuse-links type WBP are designed for efficient protection of the circuit from faults in voltage transformers (potential transformers)

Key features:

- Current limiting fuses, back-up class
- Designed and type tested according to IEC 60282-1
- Low power losses, generating additional savings during product life-cycle



Safe operation of electrical circuit with voltage transformers



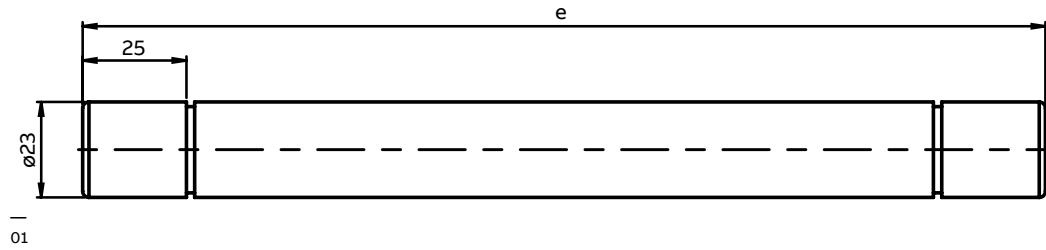
Reduce cost of service due to extended lifetime of related electrical equipment by effective limitation of short-circuit currents



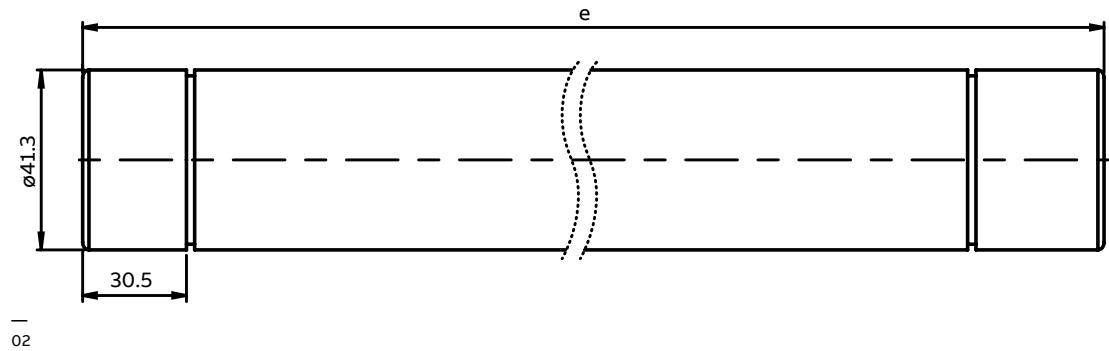
Easier handling thanks to a more durable design comparing to previous generation

- Designed for indoor applications
- Compact dimensions
- More durable design comparing to previous generation, with the use of porcelain tube
- Top level fault current limitation and interruption performance up to 63kA RMS
- Welded current path
- Contacts made from silver coated copper
- Compatible with ABB voltage transformers types TJC, TJCH, TDC and other types with suitable fuse holders

—
01
Dimension drawing of
fuse-link WBP 7.2 kV;
12 kV; 24 kV; 36 kV



—
02
Dimension drawing of
fuse-link WBP 40.5 kV



Choice of fuse-links for voltage transformer protection:

Rated voltage U_r – should be equal to or higher than the maximum operating system voltage

Rated current I_r – should be higher than the maximum continuous current of the voltage transformer

The following points should be observed:

- Initial starting current of voltage transformer, energizing and operations of installed switching apparatus should not cause fuse tripping under normal working conditions
- Rated breaking capacity of the fuse-links should be higher than the prospective value of the short-circuit in its place of installation
- The ability of the electrical system (switchgear) to withstand impulses should exceed the switching overvoltages generated by the fuse-links

Ordering and technical table of WBP fuse-links

Catalog number	Fuse name	Rated voltage U_i [kV]	Rated current I_n [A]	Rated frequency f_n [Hz]	Breaking capacity I_{b1} [kA]	Minimal breaking current I_3 [A]	Diameter D [mm]	Length e [mm]	Rated power P_w [W]	Cold resistance [mΩ]	Pre-arcing integral [A ² s]	Total interrupting integral [A ² s]	Weight [kg]	EAN 13 Code
1YMB750705M2202	WBP	7.2	0.5	50	63	5	23	210	2	6057	0.05	1.36	0.2	5908270809451
1YMB750708M2202	WBP	7.2	1	50	63	8	23	210	3.3	2185	0.09	2.42	0.2	5908270809468
1YMB750709M2202	WBP	7.2	2	50	63	16	23	210	5.2	969	0.325	8.35	0.2	5908270809475
1YMB750745M2202	WBP	7.2	3.15	50	63	16	23	210	7.6	546	1.23	16.3	0.2	5908270809482
1YMB751205M2202	WBP	12	0.5	50	63	5	23	250	3.3	9564	0.05	1.36	0.3	5908270809499
1YMB751208M2202	WBP	12	1	50	63	8	23	250	4.4	3451	0.09	2.42	0.3	5908270809505
1YMB751209M2202	WBP	12	2	50	63	16	23	250	8.3	1530	0.325	8.35	0.3	5908270809512
1YMB751245M2202	WBP	12	3.15	50	63	16	23	250	9.5	863	1.23	16.3	0.3	5908270809529
1YMB752405M3202	WBP	24	0.5	50	63	5	23	310	5.9	17534	0.05	1.36	0.3	5908270809536
1YMB752408M3202	WBP	24	1	50	63	8	23	310	8.4	6614	0.09	2.42	0.3	5908270809543
1YMB752409M3202	WBP	24	2	50	63	16	23	310	11.5	2933	0.325	8.35	0.3	5908270809550
1YMB752445M3202	WBP	24	3.15	50	63	24	23	310	21.2	1654	1.23	16.3	0.3	5908270809567
1YMB753605M3202	WBP	36	0.5	50	40	10	23	385	1.9	6074	0.02	1.85	0.4	5908270809574
1YMB753608M3202	WBP	36	1	50	40	10	23	385	6	4727	0.1	2.82	0.4	5908270809581
1YMB753609M3202	WBP	36	2	50	40	24	23	385	26.6	4208	0.325	8.35	0.4	5908270809598
1YMB753645M3202	WBP	36	3.15	50	40	24	23	385	39	2373	1.23	16.3	0.4	5908270809604
1YMB754009M4402	WBP	40.5	2	50	40	14	41.3	440	26.8	4845	0.325	8.35	1.3	5908270809611
1YMB754011M4402	WBP	40.5	4	50	40	30	41.3	440	38.4	2423	0.65	16.7	1.3	5908270809628
1YMB750747M2201	WBP-6	7.2	0.7	50	63	8	23	210	2.2	2185	0.09	2.42	0.2	5908270809635
1YMB751206M2201	WBP-10	12	0.6	50	63	8	23	250	3.1	3451	0.09	2.42	0.3	5908270809642
1YMB752405M3201	WBP-20	24	0.5	50	63	5	23	310	5.9	17534	0.05	1.36	0.3	5908270809659
1YMB753604M3201	WBP-30	36	0.4	50	40	10	23	385	1.7	6074	0.02	1.85	0.4	5908270809666

ABB Contact Center

Phone: +48 22 22 37 777

e-mail: contact.center@pl.abb.com

ABB Sp. z o.o.

Branch in Przasnysz

59 Leszno St.

06-300 Przasnysz, Poland

Phone: +48 22 22 38 900

Fax: +48 22 22 38 950

For additional information please contact your local ABB representative or visit web page.

www.abb.com

We reserve the right to make technical changes or modify the contents of this document without prior notice. With regard to purchase orders, the agreed particulars shall prevail. ABB does not accept any responsibility whatsoever for potential errors or possible lack of information in this document.

We reserve all rights in this document and in the subject matter and illustrations contained therein. Any reproduction, disclosure to third parties or utilization of its contents – in whole or in parts – is forbidden without prior written consent of ABB.
© Copyright 2021 ABB All rights reserved